

MURRUMBURRAH- HARDEN FLEXIBLE CARE SERVICES INC.

ABN 97 982 561 559

## MESSAGE FROM THE BOARD

Dear Clients, Staff, Volunteers, Sponsors and Members

This is our 3rd quarterly newsletter!

Following our AGM in October, we farewelled Janelle Slavin and Warren Walker who both contributed to the Board with their individual talents. Thank you for your efforts! At the same time, we were pleased to welcome back Matt Stadtmiller. Full details of the current Board are shown on the next page.

As you may now be aware, our grant application (to purchase and garage a second car) with Hilltops Council Stronger Communities Fund was unsuccessful. This was, of course, very disappointing but we are pursuing other avenues to make a second car a reality in the new year.

Current priorities with the Board include improving passenger comfort in the Sprinter van, procuring a website for Flexible Care Services, organising a major fundraiser for 2017 and training of care worker Jacinta Potts to support day-to-day running when other staff may be absent.

Dates for Board meetings throughout 2017 are given below. These are open meetings where members of MHFCS are welcome to attend.

Stewart Bruce  
Chairperson



**Board Meeting Dates 2017** (4<sup>th</sup> Monday of month, 5.30-6.45 pm)

January 23	July 24
February 27	August 28
March 27	September 25
April 24	Oct 23 (and AGM)
May 22	November 27
June 26	Dec – no meeting

## ACHIEVEMENTS SINCE 1<sup>st</sup> JULY

- ✓ **1,345 trips**
- ✓ **1,622 meals**
- ✓ **111 roving lunches**

There will be more number-crunching in our next newsletter!

# NEWSLETTER

*December 2016*

## OUR SPONSORS 2016

- ✓ Pepe's Ducks
- ✓ Harden Pharmacy
- ✓ Harden Bowling Club
- ✓ R & D Peisley Livestock Transport
- ✓ Harden Licensed Post Office
- ✓ Twomeys
- ✓ Sibelco Australia

We take this opportunity to sincerely thank our sponsors for 2016 – your support has had a very positive effect on MHFCS. We hope you will be able to continue as sponsors into 2017.

## SKIN CANCER CHECKS AVAILABLE

The Sprinter vehicle travels to Orange to the Central West Skin Cancer Clinic on a monthly basis. The trip begins around 8 am and returns to Harden later in the afternoon. Clients who use the service are very pleased with the attention they receive.

Please ring Trish Shea in our office  
to book your appointment and transport

Next scheduled trips to Orange are 10<sup>th</sup> February and 3<sup>rd</sup> March 2017. It is essential to book early!

## DO YOU WANT YOUR NEWSLETTER EMAILED?

If so, just call the office on 6386 3561 with your email details. Better still, just send an email to: [manager@flexicare.org.au](mailto:manager@flexicare.org.au)

## SERVICE MANAGER'S COMMENTS...

It has been a busy quarter with increased activity in transport and meals. As a result, we really **need more volunteers** as drivers for trips away and for Meals on Wheels deliveries.

The Volunteers Dinner was held on 21<sup>st</sup> September with around 40 folk who enjoyed the night. The meal was excellent!

**The Clients Christmas Party** will be held on Wednesday, 14<sup>th</sup> December from midday at the Harden Country Club. Please RSVP by 7<sup>th</sup> December.

Debby Glover, Service Manager

## CHRISTMAS LIGHTS BUS TOUR OF HARDEN AND SURROUNDS

16<sup>th</sup> & 17<sup>th</sup> December

### LIMITED SEATS AVAILABLE - MUST BOOK NOW!

Cost is \$10 per seat (includes snacks)

For booking, call 6386 3561 if you are a Flexicare client. For all other bookings, contact Kristy Stevenson on 0401 845 419. Bus departing from Trinity School and Harden Flexible Care from 8 pm. Tour will include locations in Harden and Young.

[This is a joint Community Event with Harden Flexible Care Services and Trinity Catholic School]



## ANNUAL MEMBERSHIP OF MHFCS REMAINS AT \$2 FOR 2017

**Membership renewal is now due.** Please keep your 2016 membership card as we aren't reprinting these at present. New cards, however, will be issued to new members. There are 72 on the books at present – can we get this up to 100??? Members are eligible to vote at the Annual General Meeting where elections for the new Board take place (23<sup>rd</sup> October 2017).

### HEALTHY HARDEN COMMITTEE

Our chairperson Stewart Bruce represents MHFCS on this committee which is a Section 355 Committee of Hilltops Council.

## CHRISTMAS WISHES TO ALL OUR CLIENTS, SPONSORS, VOLUNTEERS and STAFF

May you have a safe, happy and healthy festive season and wonderful start to the New Year!

### OFFICE HOURS OVER CHRISTMAS

Office closes at 1.00 pm on Friday, 23<sup>rd</sup> December and reopens at 9.00 am on Tuesday, 3<sup>rd</sup> January.

All clients will be contacted closer to Christmas regarding their care and meals.



## MURRUMBURRAH-HARDEN FLEXIBLE CARE SERVICES INC

### ORGANISATIONAL STRUCTURE 2016

#### MHFCS BOARD (all voluntary positions)

- Stewart Bruce (chairman)
- Brian Dunn (vice-chairman)
- Lyn Friend (treasurer)
- Kristy Stevenson (secretary)
- Carol Barker
- Geoff Murray (public officer)
- Matthew Stadtmiller
- Jan Ryan
- Debby Glover (service manager, ex officio)
- Jeanette Murray (minutes secretary)

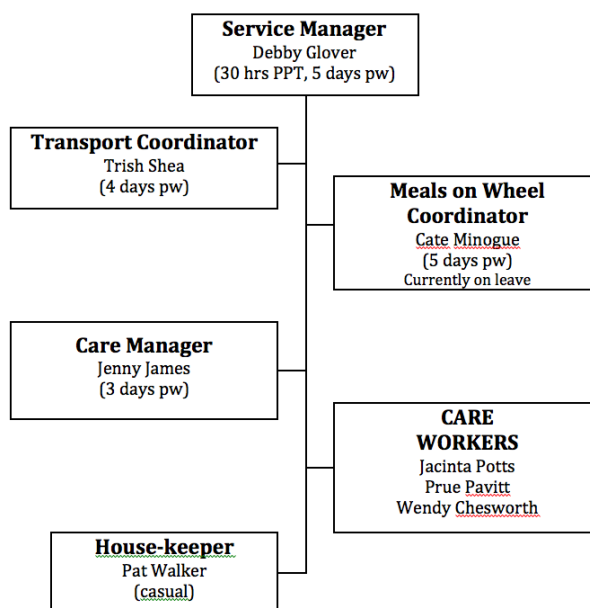
#### Notes

- ⇒ There are 8 members with full voting rights, excluding Debby Glover and Jeanette Murray
- ⇒ Board members function as a formal Board with the usual governance functions.
- ⇒ Composition of the Board reflects expertise in financial management, accounting, business acumen, pastoral care, policy development, social services, marketing and communication.

#### ASSOCIATION MEMBERS

There are currently 72 paid-up members of MHFCS who have voting rights at general meetings. Membership is to the end of 2016. Members include volunteers, employees and others from the local community.

#### EMPLOYEES



#### VOLUNTEERS

Our volunteers include:

- ⇒ Drivers who take clients to medical appointments etc in towns & cities as far away as Canberra and Wagga Wagga.
- ⇒ Meals on Wheels drivers who deliver meals to locations as distant as Jugiong.

*Flexible Services enjoys the support of around 70 volunteers.*

All our volunteers undergo stringent assessments to satisfy legislation and ensure client safety, well-being and confidence. Assessment includes medical and criminal checks as appropriate.

Yard & Garden services are contracted out as need dictates.